

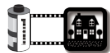
1160
McClure Crescent
Brockville

Last Revised: 2024-06-03
Page 1 of 3

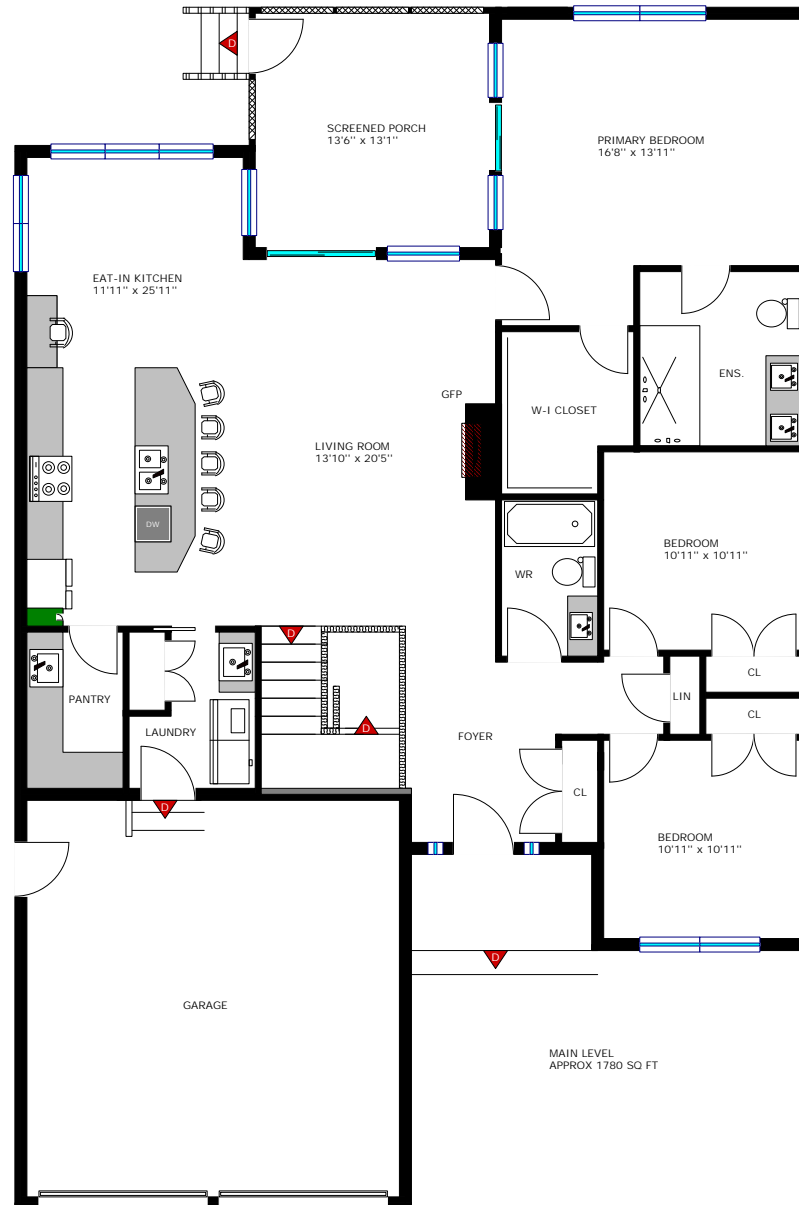
Kate KcKinnon
Sales Representative



Floor plan measurements and square footage are approximate, and drawings are for illustrative purposes only. We make no guarantee or warranty as to the accuracy and completeness of the floor plan. Please be sure to conduct an independent investigation of the property to determine the suitability for your space requirements.



www.realtyservices.ca



1160
McClure Crescent
Brockville

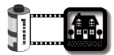
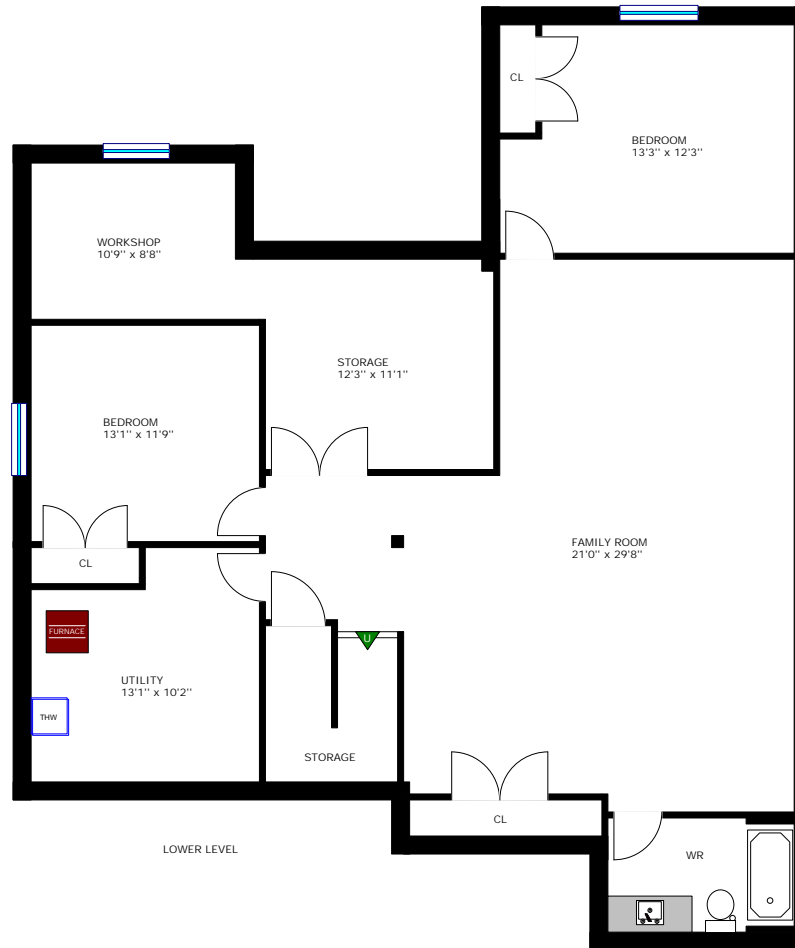
Last Revised: 2024-06-03
Page 2 of 3

Kate KcKinnon

Sales Representative



Floor plan measurements and square footage are approximate, and drawings are for illustrative purposes only. We make no guarantee or warranty as to the accuracy and completeness of the floor plan. Please be sure to conduct an independent investigation of the property to determine the suitability for your space requirements.



www.realtyservices.ca

1160
McClure Crescent
Brockville

Last Revised: 2024-06-03
Page 3 of 3

Room Measurements

Kate KcKinnon
Sales Representative



Floor plan measurements and square footage are approximate, and drawings are for illustrative purposes only. We make no guarantee or warranty as to the accuracy and completeness of the floor plan. Please be sure to conduct an independent investigation of the property to determine the suitability for your space requirements.

LEVEL	ROOM / AREA	IMPERIAL	METRIC (Metres)
MAIN	Foyer	7'10" x 9'8"	2.39 x 2.95
	Living Room	13'10" x 20'5"	4.22 x 6.22
	Eat-In Kitchen	11'11" x 25'11"	3.63 x 7.90
	+ Pantry	5'4" x 8'6"	1.63 x 2.59
	+ Laundry	7'9" x 8'6"	2.36 x 2.59
	Primary Bedroom	16'8" x 13'11"	5.08 x 4.24
	+ Walk-In Closet	7'4" x 8'9"	2.24 x 2.67
	+ 3-Piece Ensuite	8'11" x 8'11"	2.72 x 2.72
	Bedroom	10'11" x 10'11"	3.33 x 3.33
	Bedroom	10'11" x 10'11"	3.33 x 3.33
	4-Piece Bath	5'4" x 8'8"	1.63 x 2.64
LOWER	Family Room	21'0" x 29'8"	6.40 x 9.04
	Bedroom	13'3" x 12'3"	4.04 x 3.73
	Bedroom	13'1" x 11'9"	3.99 x 3.58
	Workshop	10'9" x 8'8"	3.28 x 2.64
	Storage	12'3" x 11'1"	3.73 x 3.38
	Utility	13'1" x 10'2"	3.99 x 3.10
	4-Piece Bath	9'10" x 5'10"	3.00 x 1.78
OTHER	Garage	21'0" x 22'0"	6.40 x 6.71
	Screened Porch	13'6" x 13'1"	4.11 x 3.99
	Garden Shed	7'0" x 7'0"	2.13 x 2.13



www.realtyservices.ca